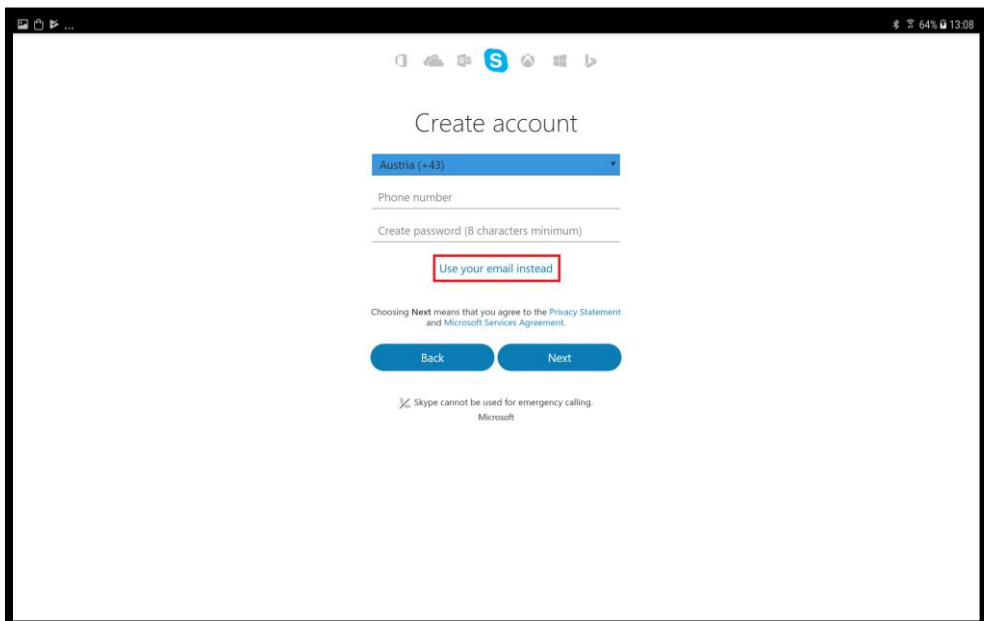
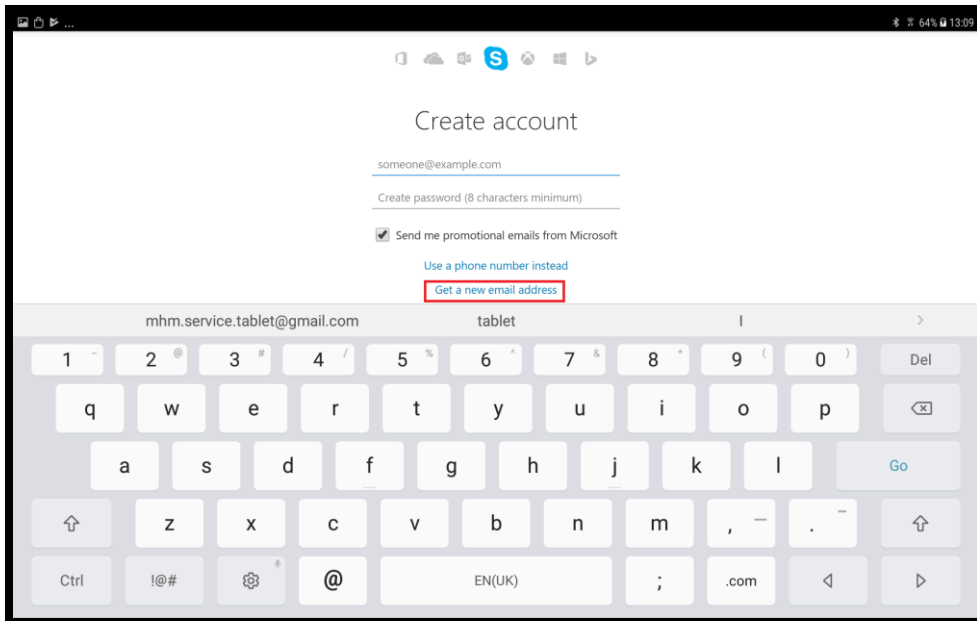


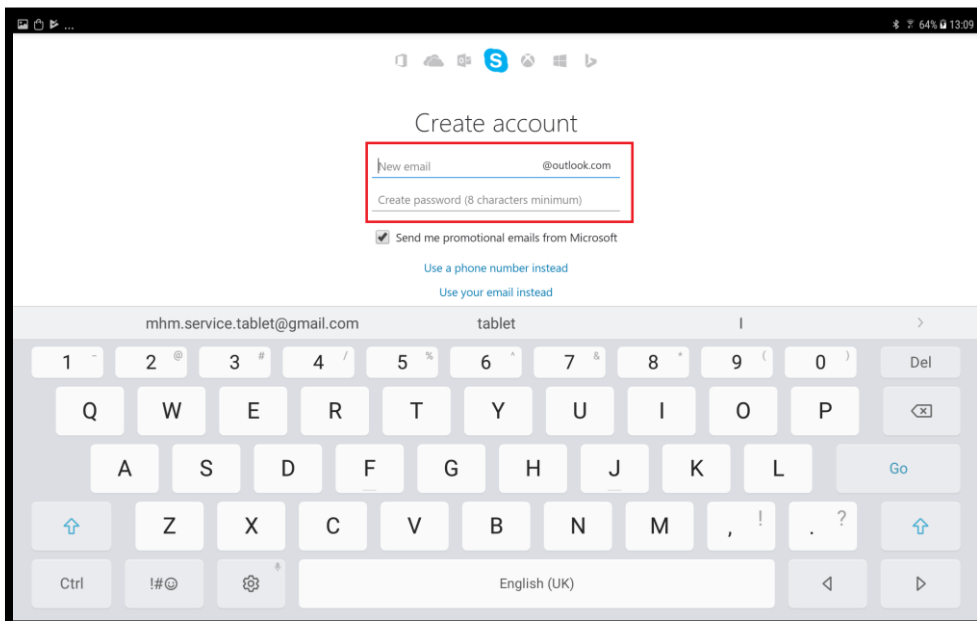
1. Start the app "Skype" and press "Create account"



2. Press "Use your email instead"



3. Press „Get a new email address“



4. Fill in in the first field „Type_serial_your_company“

Example for Machines:

SP5000:

SP5000_6037_COMPANY_NAME

SPSX:

Xtreme_23100SV_COMPANY_NAME

SPXC:

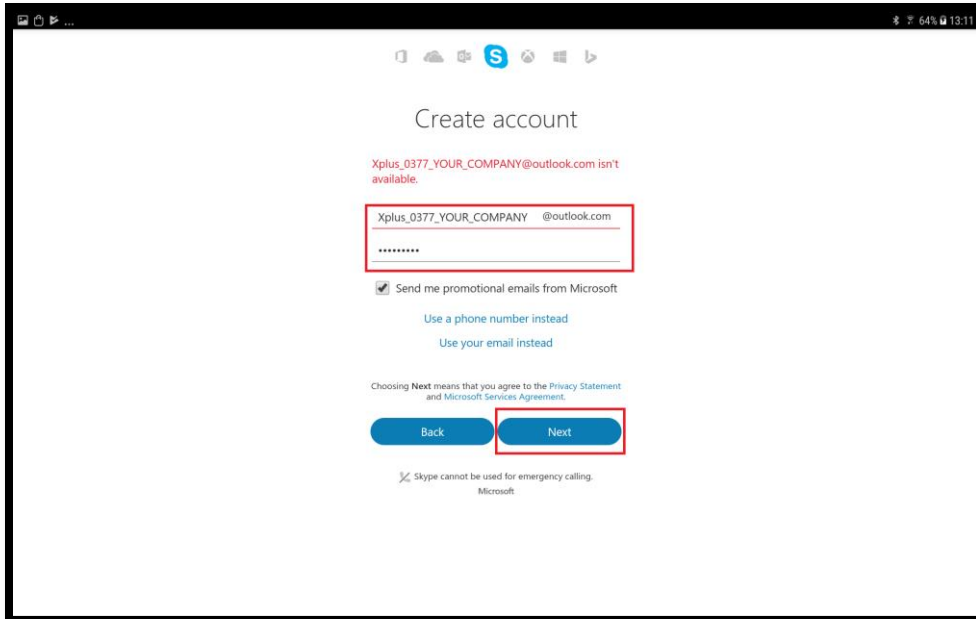
Xplus_0375_COMPANY_NAME

IQ-Oval:

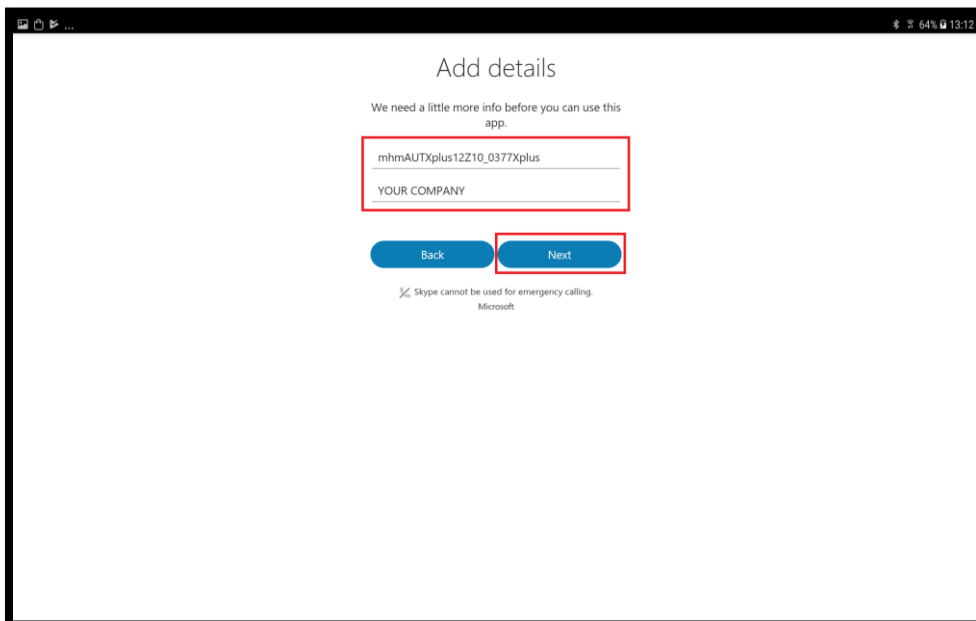
IQ-Oval_0920IQ_COMPANY_NAME

SA-EVO

SPSA_0040SA_COMPANY_NAME



5. Use „service13“ as password, after this press next.



6. Fill in the first row like the picture with following characteristics
mhm/country code/type of machine/serial

For example:

mhmTHXtreme18Z12_23270SV

mhmHUXplus08Z04_0376Xplus

mhmUSASP5A18Z12_6037

mhmBDIQ34_70X100_0920IQ

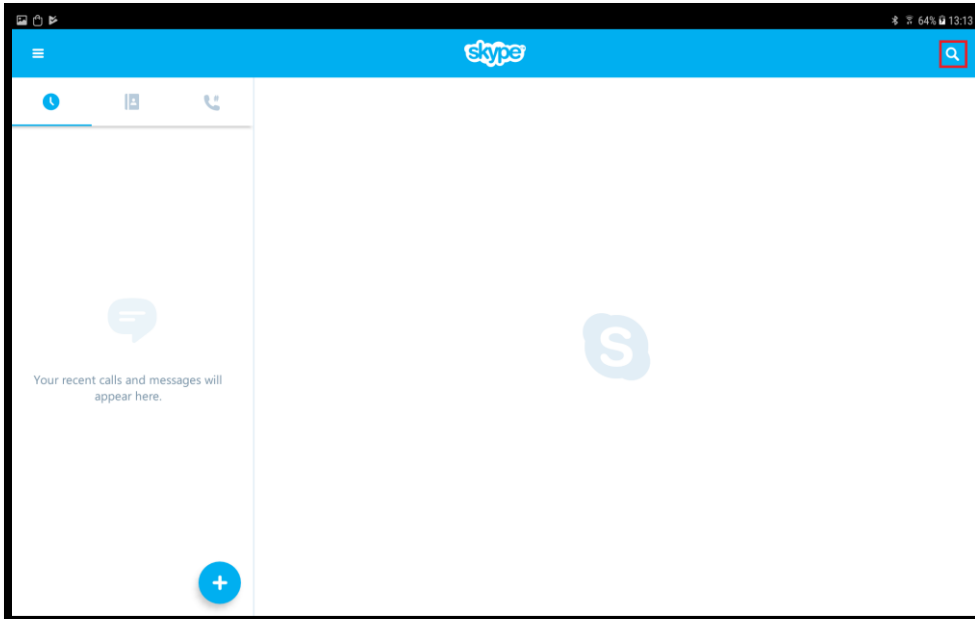
mhmDESA_EVO10Z08_0040SA

Second row fill in your company name

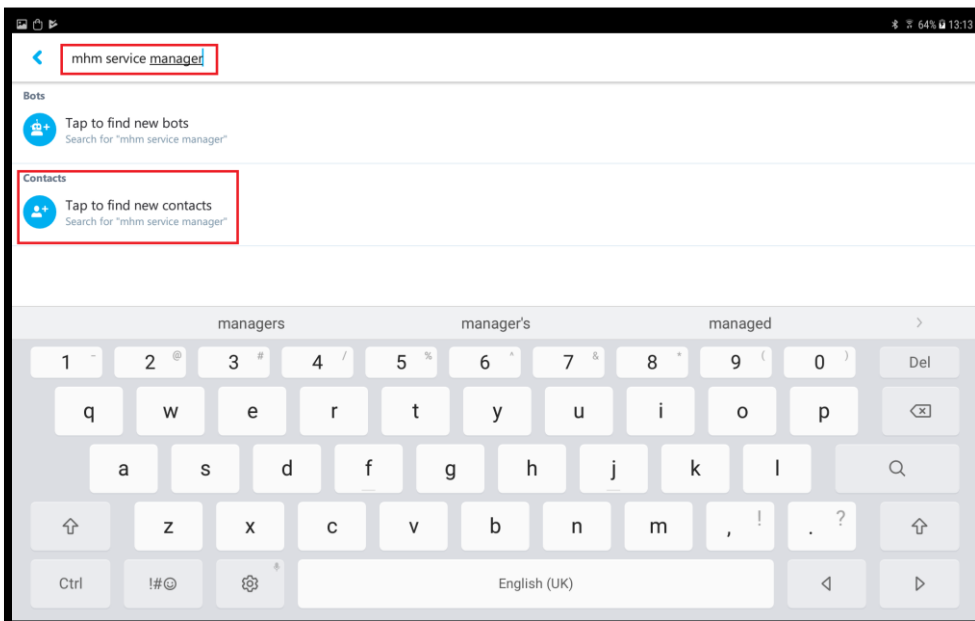
After this following the activation ask you about a mobile number.

Set it up and you receive a activation code on the phone.

Fill the code in and your Skype is activated.



7. Press the search function on the right upper corner.



8. Search for „Service Manager MHM Austria“ and press „Tap to find new contacts“
Press to on it and use „Add to Contacts“

Finish